

# Communication matters



Megan McAulliffe

## President's Message

Welcome to the Summer Edition of Communication Matters.

I have recently returned from Chicago where Colette Maier and I signed the Mutual Recognition Agreement on behalf of NZSTA. This was a significant achievement and thanks must go to Colette and the MRA working group for their substantial work in drafting the agreement. The MRA comes into effect on the 1<sup>st</sup> January 2009. A copy of the signed agreement is now available in the members-only section of the NZSTA website. At the ASHA Convention I also had the opportunity to meet with the Presidents of the signatory associations. This was an excellent opportunity to discuss issues facing all associations and continue to strengthen relationships with our international counterparts.

My primary focus at present is the restructure of NZSTA. This is a big undertaking and signals a new era for the Association. The working party has now been finalised. I would like to thank the following individuals for their commitment to this important project: Carolyn Grace, GSE, Chair of the committee; Vanessa Jerome, Otago DHB; Helen McLauchlan, Middlemore Hospital; Brigette Larkins, Ministry of Health; and Justin Strugnell-Combe, a consultant who works primarily with not-for-profit organisations. The brief of the group is to produce final position descriptions for the new Chief Operating Officer and Administrative Assistant positions. The group had an initial teleconference recently and will meet face-to-face in late January to further develop an implementation plan. The new structure must be in place by May 2009 as the current EO contract will expire at that time.

I recently received a letter from outgoing Minister of Health, David Cunliffe, in response to my letter highlighting the delays in our submission for registration. Interestingly, he stated in his response that all applications were suspended in March 2007, information that was not forwarded to NZSTA. Therefore, it is clear that our submission will continue to be held until the review of the HPCA Act is considered by Parliament. With the change in government, this brings further delays. The Exec will continue to lobby the new government and keep the members up-to-date with any further developments. A copy of Mr Cunliffe's letter and my initial correspondence is now available on the website. In order to increase transparency for the membership, all primary correspondence of direct relevance will be published in the members only section of the website.

I would like to welcome two new members to the Programme Accreditation Council. Dr Linda Hand has accepted the role of the PAC Chair following the resignation of Prof Gail Gillon.

*continued over page...*

## Inside . . .

President.....	1
Executive Officer.....	3
Publications and Area Rep Liaison .....	4
Professional Development.....	10
Professional Standards .....	14
Public Relations.....	16
Conference and Courses .....	17
Situations Vacant.....	18
Executive Board.....	20



... from previous page

Colette Maier has accepted the role of Private Practitioner Representative on the Council following the resignation of Alison Paulin. Thank you to Gail and Alison for their service to NZSTA as members of the PAC.

I was also recently invited to discuss the direction of the NZSTA at the Health Leaders Forum held in Christchurch. I appreciated the opportunity to highlight the work being undertaken by the Executive and to gather feedback and input from the Health Leaders group. Forums such as this are beneficial to both the Exec and members of NZSTA.

At this same forum, I was invited to discuss NZSTA's decision to adopt the standard diet terminology of Speech Pathology Australia and the Australian Dietetics Association. The decision to adopt the standards was made by the previous Executive Committee in September 2007. At the time, this was communicated to the membership via Communication Matters (Professional Standards). However, no process for implementation of the standards was outlined and consultation with the profession was lacking.

The meeting with the Health Leaders proved to be very productive. Along with NZSTA, the Health Leaders agreed that the implementation of the common diet

terminology was a good step forward. A process for implementation of the standards was discussed and it was proposed that a combined approach to the implementation of the new standards with the NZ Dietetics Association (NZDA) may be the most productive way forward.

On the 6<sup>th</sup> November, I wrote to the NZDA requesting that they join NZSTA in a joint working party that aims to: (1) develop a resource and training package for the diet terminology implementation and (2) disseminate resources to the members of NZSTA and NZDA for implementation in their district health boards/regions. In consultation with the Health Leaders Forum, it was felt that a joint approach from the two Associations would be the best way of ensuring the successful implementation of the diet terminology across New Zealand.

I am yet to hear back from the NZDA. However, if you are interested in being involved in a joint working party, please contact Shona.

The Exec received quite a bit of feedback recently from the membership via the Area Minutes, particularly around advocacy and the role of NZSTA. The area minutes are always interesting and the Exec aims to take on board the suggestions of the membership. I have noticed a pattern emerging from these meetings. It is

apparent that communication with members is an ongoing issue. From the area minutes, it appears there is some confusion regarding the role of NZSTA, what is currently being done for members, how this is achieved on a limited budget, and what we hope to gain from the restructure of the organisation.

I would like to address this in the form of a teleconference, similar to that which was held when the membership agreed to move forward with the proposal for registration of the profession. We have scheduled this for Friday February 13<sup>th</sup>, to coincide with the Exec meeting in Christchurch. Further details will be released, via Area Reps, in the New Year.

This will provide a forum for the Exec to communicate all current NZSTA initiatives and challenges and to obtain direct feedback from a broad range of members on these initiatives.

I look forward to the opportunity to speak directly with members from across the country. The Exec is currently working hard to address the issues of communication and I hope this is a good step towards improved communication.

I hope that you have an enjoyable Christmas and holiday period. Travel safely.

*Megan*

## The NZSTA Executive Committee National Teleconference

*Friday, February 13<sup>th</sup> 2009 (time to be confirmed)*

This teleconference is an opportunity for the NZSTA President (Megan McAuliffe) to outline the current role of the Executive Committee, to discuss current initiatives being undertaken by this committee, and to outline the Executive's vision

for the role of members in moving the profession and the association forward. Members will also have the opportunity to provide feedback on these issues.

Further information will be released via Area Representatives in the New Year.

## Qualifications Approval

Since September 2008 the following overseas therapists have had their qualifications approved for practice in New Zealand:

Sandra Klopper, South Africa

Catherine Sanderson, England

Rachel Le Roy, South Africa - Provisional

Catherine Maunsell, England

Henriette Schutte, South Africa

Andréa Benoit, Canada

Routhelle Gaerlan, Philippines

Danielle Le Comte, USA

Jane Gough, England

Jayne Tibbs, England

Julie Wood, USA

Annalle Aleligay, Australia – Provisional

Andrea Barltrop, Australia

Linda King, Scotland

Mary Joy Castro, Philippines

Kara Gourlay, Scotland - Provisional

We welcome these new overseas members to NZSTA and know that you will make them welcome on their arrival to New Zealand and offer them assistance.

There are five applications currently being processed by the Qualifications Approval Committee.



Shona Powell

## Membership Update

As at 1st December 2008 there were 604 members (1st December 2007 - 581)

Full members	418
Provisional	73
Student	71
Non-practising	26
Associate	3
Life/Honorary	9
Professional Associations	4

(RCSLT, SPA, CASLPA, and ASHA)

You can help by encouraging non-members at your workplace to join their professional body and invite them to come along to your local area meeting. Application forms for NZ trained applicants can be completed on-line, while application forms for therapists trained overseas are available by emailing the Executive Officer or can be downloaded from the NZSTA website.

Membership of NZSTA has many benefits; check out the website for more information.

## 2009 Subscriptions Due 1st January 2009

Subscriptions for the 2009 calendar year are due on 1st January 2009. You can complete the membership form on-line any time now at: [www.speechtherapy.org.nz/about-nzsta/nzsta-membershipform](http://www.speechtherapy.org.nz/about-nzsta/nzsta-membershipform).

An e-mail will be sent shortly with renewal and tax invoice details with a form you can print out to renew membership if you prefer not to complete the membership form on-line.

If you require a form to complete before then or if you haven't received the e-mail by the end of 2008 please contact the Executive Officer ([nzsta@speechtherapy.org.nz](mailto:nzsta@speechtherapy.org.nz)). Payment can be made by cheque or direct to the NZSTA bank account. Membership will cease if not paid by 31st March 2009.

## NZSTA Meeting Dates for 2009

13th and 14th February 2009, Christchurch – Executive Committee

30th April and 1st May 2009, Nelson – Executive Board and AGM

19th and 20th June 2009, Auckland – Executive Committee

11th and 12th September 2009, Christchurch – Executive Committee

4th and 5th December 2009, Location to be confirmed – Executive Committee

## Meeting Minutes

Minutes of the August 2008 Executive Committee meeting can be viewed online in the "Information for Therapists" section of the website at [www.speechtherapy.org.nz](http://www.speechtherapy.org.nz)

## Moving or Changing Jobs?

It's easy, just send an e-mail to [nzsta@speechtherapy.org.nz](mailto:nzsta@speechtherapy.org.nz) with your new details. This will ensure you continue to receive Communication Matters and information via e-mail.



Greetings! Another quarter has passed, and it has, once again, proven to be a busy one for us all. My congratulations – and thanks – to Colette and her colleagues on the MRA working party for achieving the significant milestone of signing the MRA. As my colleagues on the Executive have noted, the new process will be in place from January 2009. As part of this process, new pages will be created on the website for information relating to MRA. In addition to these changes, a number of updates have been made to the website; be sure to visit [www.speechtherapy.org.nz](http://www.speechtherapy.org.nz) to check these out.

While I'm talking about the website, remember, as paid members of the NZSTA, you have access to exclusive content; including full access to the New Zealand Journal of Speech-language Therapy, access to minutes of the Executive committee meetings, access to information on forthcoming PD events, and access to updates on projects of national importance (including the MRA). As members, you also have the facility to update your own email address: simply log-in, select "preferences" in the top-left of the screen, and update your details as necessary (remember to save your changes!).

There has been a significant amount of correspondence around the listing of private practitioners on the website. This was again discussed in great depth at the recent Executive Committee meeting in Rotorua and therapists working in private practice should expect further correspondence on this matter from the Executive in the New Year.

In the latest round of area meetings, we had 95 attendees throughout the country – while this is a great effort, we'd like to see at least double this amount attending area meetings. Remember, these meetings are

one of primary ways in which information is conveyed and feedback is sought. If you have ideas for how to attract more members (and non-members) to these meetings, please contact either myself or your area representative.

Last quarter, two prizes were introduced; one prize of a free membership for a member who attended every area meeting for the calendar year, and one prize of a \$20 grocery voucher to the area attracting the most non-members to an area meeting. I am very pleased to congratulate Robyn Pooley (Auckland) on winning the prize of free membership for 2009. I am equally pleased to announce the Wellington area as the area attracting the most non-members to their area meeting.

It's not all good news though; this quarter, we say farewell and thank you to Libby French and Sandy Yang, our two student representatives for the University of Auckland. However, I'd like to welcome Melinda Johnson, who has agreed to take on this role.

Finally, I'd like to wish you all the best for a very Merry Christmas and Happy New Year – enjoy the break, wherever it may take you.

## Area Updates

### Northland/ Tai Tokerau

Therapists are very sorry to farewell the following...

- Catriona Collins who has moved back to Australia
- Kristin Sheppard who has gone to Wanganui
- Vallari Chavan has taken up a position as an Audiologist at Whangarei hospital

...but are pleased to welcome the following:

- Monique Lund to the Whangarei GSE office
- Kathy Arlidge who has joined GSE Tai Tokerau (based in Kaikohe office)
- Rachel Adcock is contracted to Abano/ Rehab working in the Kerikeri area.

### Auckland

- Vacancies:
  - 0.5 permanent position at Faculty of Education, University of Auckland

- 0.7 one year parental leave at CDC Kidz First Child Development, Middlemore Hospital, CMDHB
- Fiona & Heather contributed to NZ Doctor magazine (in conjunction with dietitians), with a paediatric feeding article, distributed to all GPs
- START runs Adult clients booster and practice courses (2 hour blocks)
  - Advert in 3 x local newspapers & in Agony Aunt section in Sunday Star Times!

### Waikato / Bay of Plenty

Tauranga:

- Robin Matthews (Tauranga Hospital) is lobbying with people who have Parkinson's, and is conducting a pilot questionnaire to find out what service they would like, and then is creating a service to match the expectations taken from the results.

- Basic Dysphagia and Communication training will be rolled out to various Nursing Homes in Tauranga. Training will be provided for Nurses / Caregivers / Health Care Assistants etc. It will be a 2 hour session, 2 Therapists, 1 addressing Dysphagia, as well as Communication. This is expected to start in January and go until November of 2009. Prices are being negotiated.
- Aphasia Groups. Drop in conversation groups for people with communication difficulties is a Pilot Programme currently being run by Meg Grawburg at Tauranga Hospital. It is envisaged that the new Therapist (Michelle Cunningham), who starts at the beginning of February will take over the reins of this group.
- Feeding Clinic. Candy James and Julie Graves (Dietician) at Tauranga Hospital will be conducting feeding clinics for Parents and Caregivers. It starts at the end of November, and will be on the first Friday of every month.

- Bay of Plenty Laryngectomy Luncheon was held on the 12th December at 12.30pm at the Citizens Club in Tauranga.
- Tauranga Hospital have a new Videofluoroscopy Chair which was demonstrated to the team on the 7th November 2008.

#### Whakatane:

- Parkinson's group and Aphasia Group running at Whakatane Hospital
- Whakatane GSE welcome Anne Robinson
- Fiona Dominick (Whakatane Hospital) is going on maternity leave March 09

#### Taupo:

- Maree Morice (GSE Taupo) leaving on Maternity leave end of December
- 2 new SLT's being employed by GSE Taupo Term 1 2009

#### Hamilton

- Patricia Avenue School farewell Koa Ward (Team Leader) but welcome Rebekah Marshall

#### Central

- Palmerston North Hospital has new staff member Bidy Robb beginning in January.
- Taranaki Base Hospital is looking for parental leave cover required from March/April 2009.
- GSE have two new grad positions in Otaki and Palmerston North.
- There has been a shift in GSE staffing – Suzie Proctor has moved to Wanganui GSE and Jess Fenwick has started in Palmerston North.

#### Wellington

- CCDHB welcome back Val Spooner and Kate McLean from parental leave
- CCDHB SLT's are administering first VFS in the new regional hospital
- Hutt Valley DHB: Natalie Richardson is going on parental leave, and Gay Williamson is leaving, but will continue work in the Wairarapa, as well as in private practice

#### Otago

- Permanent new grad staff have been recruited at Dunedin Hospital. Two will start in OPH in February 2009
- Jenna Ryan will start at the Vera Hayward Centre in January 2009
- We have also been lucky to recruit 2 senior staff members which should also result in filling the currently vacant Professional Director role
- In 2009 we will farewell Karen Bridge, Siobhan Lillie and Lorna McQuilkin – all recruited from the UK. Karen and Siobhan will finally return home after 18 months away travelling and working.
- Dunedin Hospital ran a late Awareness day on the 6th of October which saw the team pull together to raise awareness of SLT. The day started with breakfast at Capers. It also involved wearing purple t-shirts – the colours of the SLT stickers used in the medical notes and testing colleagues as to their SLT knowledge!

---

## What's Happening Where We Work?

---

### Open all hours? Late Night Speech-language Therapy

*Submitted by Rachel Dobbin, Speech-language Therapist, Stuttering Treatment And Research Trust*

Whilst others head to the shops on Thursdays for some late night shopping, the SLTs at START are still open for business!

START, the Stuttering Treatment and Research Trust, is based in Parnell, Auckland. Our clients range from preschoolers to adults. For clients who work and those traveling from further afield, the regular 9am-5pm opening hours don't always suit. We offer some early morning appointments as well as some 5pm and 6pm appointments – usually very popular!

This year we have introduced evening practice sessions for adults who have some knowledge of the smooth speech technique and would like another opportunity to

develop their skills. These are two hour sessions, Thursdays 6pm-8pm held every three months, and are run by one or two SLTs with up to 6 clients. These are held in addition to our well established Booster Courses, (Friday evening and all day Saturday) and Intensive Therapy Courses (5 days, held annually).

Looking ahead to 2009, we are hoping to offer a course for teenagers. This is likely to be a Friday-Sunday course for 13-16 year olds who would embark on a "speech therapy adventure", traveling to a residential camp. A timetable combining therapy activities with outdoor pursuits would see the teens challenging themselves physically and mentally! START will be

advertising this once the details are confirmed.

Telehealth – therapy over the phone – is another service delivery model that we are exploring. Research is suggesting this as a viable option for adults who may have difficulties with our services.

START continues to offer support and supervision to therapists regarding their work with people who stutter, and we offer training courses – please contact us for more information!

So the life of a START SLT involves some late nights and some lie-ins, some long distance calls and some local business... but always lots of variety!

## Eating and Drinking in Adults with Intellectual Disabilities: Creating successful mealtimes

Submitted by Scott Miller, Speech-Language Therapist, Explore Specialist Services

Imagine requiring assistance eating and drinking but without the formal means of communication to let your support person know that:

- a) they are feeding you too fast
- b) you don't actually like the taste of pureed mince and potatoes together
- c) you are not actually all that hungry at the moment
- d) a cup of tea would be nice with that rather dry scone you are feeding me
- e) you would actually like some quality time over the mealtime

These are challenges people with severe to profound intellectual disabilities encounter at every mealtime. What is for many the highlight of the day can also potentially be a terrifying experience of multiple instances of dysphagic episodes, which often can be prevented with some simple training and education.

As a Speech-Language Therapist working for Explore supporting adults with intellectual disabilities and their support teams, it is evident that safe eating and drinking practices are paramount to client health and wellbeing. This brief paper discusses the situation within which the remaining people

discharged from the Kimberley Centre in Levin negotiate the joys and hazards of eating and drinking in a supported community living environment.

Dysphagia can be a serious problem for people with intellectual disabilities. Problems with oral motor control and swallowing can potentially lead to discomfort, poor nutritional status, dehydration, asphyxiation and aspiration (Chadwick, Joliffe and Goldbart 2003). Further, research by Perske et al. (1977, in Kuhn & Matson, 2004) suggests 80% of this population experience serious feeding problems. The outcomes of aspiration in particular often lead to upper respiratory tract infections which are, unsurprisingly, a leading cause of mortality among people with intellectual disabilities (Chadwick, Joliffe, Goldbart & Burton 2006).

Safe eating and drinking therefore become key factors influencing quality of life and wellbeing. Quality of life measures including the dignity, care and respect dependent eaters receive while also ensuring the wellbeing of safe eating and drinking remain central to assessment and management. Of the discharged Kimberley residents, most present with at least a

moderate intellectual impairment and co-morbid physical disability that affects safety from mealtime to mealtime. Further, the support worker assisting or overseeing the mealtime brings with them their own attitudes and values to the role. Is it a task to be completed or is it a shared experience with the sensory opportunity it deserves? Is the support worker tuning in to the needs of their client; was that coughing, have they cleared their mouth before receiving the next mouthful, are they alert and aware of the meal being presented? All of these variables can have an effect on the success of the session.

Training support staff remains the most crucial management tool the SLT can use to affect safe and meaningful mealtimes. Educating staff on the process of swallowing, the noticeable symptoms of a dysphagic episode, the subsequent outcomes if recommendations are not adhered to, the importance of oral hygiene and simple, immediately applicable strategies (e.g. slow down and reducing the serving size) constitute the creation of more successful mealtimes and ensuing increases in quality of life.

Bon appétit!

---

## Student Update: Massey University

Submitted by Karen Freymark & Samantha Holmes, NZSTA Student Representatives

Hello again from the Massey student representatives, Karen and Sam. 2008 was even busier than 2007, and we are both looking forward to entering into 2009, our fourth and final year of the BSLT degree. The third years have survived arguably the most difficult year of the degree, enjoying both adult and paediatric placements in a near-even mix of clinical and theoretical coursework. Mid-year saw both student representatives and some fourth-year students volunteering at the joint SPA-NZSTA conference in Auckland. We found the conference a valuable and enjoyable experience, meeting hundreds of SLTs working in the field and attending many educational and inspirational seminars/workshops.

The fourth years are currently celebrating the completion of their degree, three of whom will be named Massey Scholars due to their outstanding grades. In addition, five students from various years have been awarded scholarships in the past year.

There has been an increase in NZSTA membership from the first and second years, which is fantastic to see. Sally Clendon (a new staff member) has kindly offered to assist our student NZSTA liaison, as we endeavour to promote a relationship between Massey students and the NZSTA. As we will be handing this position over mid-next year, Sally will also be a great help to the new student representatives. Sally has accepted a position as a permanent

senior lecturer. Her areas of expertise include language and literacy development for individuals with developmental disabilities, particularly those with complex communication needs who use augmentative and alternative communication.

The post-graduate programme is now up and running at Massey - a welcomed addition to the growing Speech Language Therapy course. Academic staffing successes this year include Yvonne Cope, Auckland area rep and clinical director, gaining her post-graduate certificate in clinical teaching.

We expect 2009 will be another busy and exciting year for Massey Speech and Language Therapy.

## Student Update: University of Auckland

*Submitted by Libby French & Sandy Yang, NZSTA Student Representatives*

2009 sees another bunch of outstanding women graduate from the MSLT(prac) programme at the University of Auckland. In typical MSLT style, it has been a hectic race to the finish, and I'm sure I speak for all second years when I say it is a huge relief to be finished! Thirteen girls will graduate from the programme early next year, most of whom have jobs lined up with various employers throughout the country. It has been a gruelling and intense two years, but we are all excited at the prospect of being released into the professional community.

All students complete a five week block placement each year, in February/March for second years and July for first years. This year saw students venture from Wellington to Whangarei. These placements continue to be a highlight and are such a fantastic and vital component of our learning, having the opportunity to witness the realities of our profession outside of our clinic environment is invaluable. Thanks must go

to all external supervisors who have hosted us during the year.

For second year students the year has been dominated by research projects and clinical commitments. Research has been wide ranging across clinical areas and populations. Sharon Farao has recently become the most recent student to join the ranks of published authors, with her research into speech sound development in bilingual Samoan and English children being published in the latest edition of the International Journal of Speech Language Pathology.

2009 also saw SLT students from both first and second year venturing into the operating theatres of Starship for the first time under the supervision of Dr. Colin Barber. Seeing the anatomy of the head and neck in the flesh was an awesome opportunity for us all.

Any mention of this course would not be complete without a huge thank you to the

lecturers and clinical supervisors on the course. They are a tireless bunch of women whose commitment to us as a group and the furthering of our profession is truly formidable. They have constantly made themselves available to support and guide us, giving up their weekends, responding to emails at all hours of the night and from various corners of the globe, and providing sugar (in the form of The Best Brownies Ever) when reassuring words were no longer enough to relieve the stresses of second year. We simply cannot thank you enough.

And so the changing of the guard continues, with a new bunch of students set to enter the halls of the Tamaki campus in 2009. Melinda Johnson will take over the reins of student representative for the University of Auckland in a joint position with an incoming first year student. We wish all students throughout the country the best of luck and look forward to working alongside many of you in the future.

---

## Student Update: University of Canterbury

*Submitted by Amy Campbell and Amy Collings , NZSTA Student Representatives*

2008 has been another busy year for all students and faculty at the Department of Communication Disorders, here at the University of Canterbury.

This year marked the beginning of the newly founded "Speech Soc" at the University of Canterbury; a social networking committee working to strengthen the relationship between all three year groups through various activities throughout the year. The vision and work of a group of 4th Year students has led to many successes this year, and it is hoped the society will continue to thrive, with more members and even better activities for 2009.

Students in Year 3 were able to strengthen their clinical skills and gain valuable experience through their clinical practical this year, particularly their five week intensive block placement. Support from field supervisors and clinical educators was a vital part of their learning process. Several potential employers also extended work opportunities to the third year students, including two students winning the Counties Manukau bonded scholarship as well as a number of students being offered places at Singapore hospital upon their graduations.

Second year students had a number of class events to celebrate the end of the first

professional year, including the inaugural "Speechies" awards. They report that it was "...a fun night, and great to do [activities] with the class apart from lectures and study". Second year students eagerly await the opportunity to experience an increased amount of practical work in 2009.

Speech-language Therapy Awareness Day was a success this year, with Dean Sutherland leading a workshop on 'how to thicken beer' and various advertisements being displayed in the on-campus clinics.

2009 looks like it will be another busy year for all at the University of Canterbury; we look forward to seeing what exciting events will take place in the New Year.

## The End of an Era: farewell to Koa Ward

Submitted by Helen Gully & Sam Brown, Speech-language Therapists, Patricia Avenue School, Hamilton

Koa Ward, Speech-Language Therapist at Patricia Avenue School, Hamilton is retiring at the end of the year after over 30 years as an SLT. She fondly recalls her multiple training and re-training, long before the BSLT came into being and has had a varied and interesting career including stints in Hong Kong as a kindergarten teacher and in American Samoa for 4 years.

She has a special interest working with students with Cerebral Palsy and was in her element at Carlson School, Auckland where she worked from 1989 – 2004, becoming

Associate Principle in 1998. She had a reputation for creating great communication books and was one of six staff who went to Hong Kong to visit a number of Conductive Education sites before returning to set up conductive education at Carlson. Koa was an integral part of this new programme.

Koa moved to Patricia Avenue School in 2004 to take the lead SLT and Therapy Team Leader role. She has worked tirelessly, always recognised and celebrated her other successes, has been a great advocate for therapists in schools, and has never stopped

being enthralled by all the students she has worked with. In her time here, her team has grown enormously and she will be leaving behind a well established team who will miss her greatly.

We wish Koa all the very best in the next phase of her life as she switches jobs to become a fulltime Grandma for 18 month old Katarina.

With fond wishes and a huge thank you on behalf of all the staff at Patricia Avenue School.

## Meet Your Area Representatives: Part Two

Following on from last quarter, here is a chance to 'meet' your local NZSTA representative. To read about the reps from Northland/Tai Tokerau, Auckland, Central, Wellington, and Otago/Southland, see the spring edition of *Communication Matters*.

### Waikato / Bay of Plenty



**Carla Knott**

I work in private practice (Talkabout Communication Ltd.) in Whakatane, but I also cover the wider Bay of Plenty. My work mainly involves ACC contracts, but I also do some contract work for the Ministry of Education, and have some private clients also. I have acted in this role since 2004, in order to provide me with greater flexibility with hours, which helps work around my daughter's schedule. My areas of interest include TBI and professional supervision; I love taking students, and have recently begun taking them as part of my private practice. I was keen to be an area representative as I wanted to become involved in the association once again. The part of the role I enjoy the most is getting to meet members in my area – it is always interesting to hear different perspectives on the issues affecting the profession, and to work with members in brainstorming possible solutions.

### Canterbury



**Tika Ormond & Ali McCormick**

I studied for my SLT degree in the twilight zone of the early 80's in London and then worked in AUS before alighting on the sunny shores of NZ. I have been at the University of Canterbury for 20 years as of next year- I joined in the first year of the degree programme. I have worked in clinical education since that time with special interest in voice and stuttering disorders. I have seen incredible growth in the dept but also in the numbers of undergraduate and post graduate students who are with our dept. I found being an active member of NZSTA was very difficult when I had small children so once they got older I decided it was a good time to put some energy back into the Association. I would like to be able to create amazing dynamic area meetings but I think Ali and I are really happy that people are coming to the breakfast meetings and networking with others. I am due to visit University College London in December which is where I completed my training. It will be very interesting to see how that dept has grown and changed over the last two decades. I expect our NZ training to sit very

well alongside our British counterparts. I will be very keen to see how they also work alongside the RCSLT.

### Student Reps: Auckland University

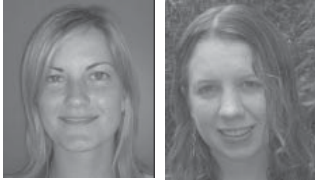


**Sandy Yang & Libby French**

Hi, we are the recently appointed student reps for the University of Auckland. We are in our 2nd year of the MSLT(prac) course, and loving it. Libby is currently on clinical placement with GSE Manukau, and Sandy is at Auckland City Hospital. We love the diversity and hands-on experience involved in our placements. We are also involved in different research projects, with Sandy looking at expressive vocabulary in 5year old Mandarin-English bilingual speakers, and Libby examining the parental and professional perceptions of the service we provide to children with tracheotomies.

*Editor's note: Libby & Sandy are now the outgoing student representatives for the University of Auckland. Their replacement is Melinda Johnson.*

## Student Reps: Massey University



**Samantha Holmes & Karen Freymark**

My name is Samantha and I'm co-student rep for Massey. I am nearing the end of my third year of the degree. My particular area of interest is adult neurogenic disorders and I hope to work in a hospital setting once I graduate. I enjoy being a rep because it's a great way to meet people who are working in the speech therapy area and to make contacts all over the country. The highlight so far has been the conference and getting to know everyone on the board.

Hi everyone! I'm a third year student who took on the joint role of NZSTA student rep (with Sam Holmes) for Massey University in 2007. I am now nearing the end of my third year, and am looking forward to a long summer break, before entering into my final year. At the moment I am unsure of where my interests lie, in regards to adults or children. This year I have been very grateful

to receive health placements working with both of these populations, and have enjoyed them thoroughly! So, hopefully by the end of next year I'll know where I'm heading! However, I have been very grateful to receive placements with both of these populations this year, and have enjoyed them equally. It's good to hear what's going on out in the field, and share this with my fellow peers. I also enjoyed assisting with the conference, and attending many of the valuable workshops and presentations.

## Student Reps: University of Canterbury



**Amy Campbell & Amy Collings**

Hi everyone, my name is Amy Campbell and I have recently been elected to act as the student rep for the University of Canterbury. I am currently in my third year (second professional year) of study at the University of Canterbury. My area of interest

in speech and language therapy is adult acquired health, particularly motor speech disorders. Over the next year I look forward to liaising with NZSTA student members and the executive committee. Finally, thank you to Bidy Robb, my friend and mentor for all your help and support and also for your work as the student rep for the past two years. It's a busy time ahead, but I am pleased to be part of it!

Hi everyone. My name is Amy Collings and I am the co-student rep from the University of Canterbury. I became aware of Speech Language Therapy half way through my Psychology degree and was excited to be finally beginning my study towards it at the start of this year. I was so excited to find a course that combined my interest in medicine/health, as well as lots of people interaction. I have so far really enjoyed all the courses, and enjoy the challenges and surprises that the clients in my clinic can sometimes produce! I am looking forward to beginning to examine speech disorders in next years courses, as well as my first out-of-town placement! I was approached to be a rep by our retiring 4th year and am pleased to be able to be part of the team.

## Mutual Recognition Agreement Signing





Felicity Bright

The last three months have been fairly busy for the PD portfolio. There has been a lot of communication and preliminary planning taking place for future PD events, though many are still in the 'waiting to be confirmed' category. As we have more details, we will pass them onto you.

We are hoping to be able to offer a **Child Language Masterclass** with Dr Bob Owens in July. Bob will be presenting a masterclass in Auckland, and the NZSTA hopes to be able to offer this in Christchurch for interested clinicians. Once confirmed, we will let you know the details.

Planning for the Nelson PD Seminar and AGM is going well. This will be held on **30 April and 1 May 2009** at the Trailways Hotel. Pencil the dates into your diary. There has been good interest from people wanting to present papers, although there

are still a few slots available. Please contact me if you are interested. I am hoping to get the program confirmed by mid January to give you plenty of time to confirm funding and book (hopefully) cheap flights to Nelson.

We have contracted a conference organiser to assist us with planning the **2010 Conference**. This will be held in Wellington. Many thanks to Kate McLean, Claire Winward, Emma Necus and Molly Kalleson who have all volunteered to be on the Conference Planning Committee. Clare McCann will act as Chair of the Scientific Planning Committee. I encourage you to think about what you could submit for the conference – case studies, quality initiatives, new models of service delivery, research findings, and audit results are all possible topics for presentation. At the 2008 conference, only 21 of 142 papers, and 11 of 38 posters were from NZ SLTs. This is not enough to fill a 3 day conference program, and if we are to continue to offer a quality conference program, we need SLTs to be submitting presentations.

Clare McCann and Dean Sutherland will be presenting a session on "Case Study Design" at the Nelson PD Seminar. We hope this session will refresh and build on your knowledge of case study design and will inspire you to complete case studies in your workplace. The 2010 conference would be a perfect forum to present your case study results!

Exec has been reviewing the **NZSTA Awards** available on an annual basis. There were a number of new awards created in 2008 and a summary of the awards is provided in this issue of *Communication Matters*. Please contact myself or Shona for more information about the awards. We are currently in the process of reviewing the criteria and developing application forms – these should be available mid-January. The application deadline for most awards is February 1, 2009.

**Special Interest Groups** are growing in number and in breadth throughout New Zealand. Thank you to all who provided details of the SIGs at the recent area meetings. Dean and I will be contacting the SIG co-ordinators to get more information about each SIG, the activities, and to explore how NZSTA can support you in publicising and co-ordinating your SIG. We will also provide information about how you can access funding for running PD events. This may support development of national SIGs and assist in planning teleconferences or videoconferences.

As always, I welcome feedback about how NZSTA can support your professional development. This portfolio is a busy but exciting portfolio. I hope to see the development of a strong, regular professional development program over the next 2 years, one that utilises multiple (and affordable) modalities for supporting your development.

## NZSTA Awards

NZSTA has a number of awards that are granted on an annual basis. These include:

### Clinical Field Supervisors' Award

Awarded in conjunction with the 3 university programs, this award recognises commitment to, and excellence in field supervision. It is awarded annually to one supervisor.

### Student Achievement Award

This recognises development of clinical skills and excellence in all practice areas. This is awarded to one student from each NZSTA-accredited program on an annual basis.

### NZSTA/Medical Staffing International Award for Achievement in Speech-Language Therapy.

This is awarded to an NZSTA member annually and is designed to stimulate

innovative approaches to service delivery. It can be awarded for one of three categories: quality in practice, research or leadership of practice team. See the MSI website for full details: <http://www.medicalstaffing.co.nz/s-speech-language-therapy.asp>

### Research Excellence Award (sponsored by Stella Ward)

This award recognises the work of one outstanding post-graduate student in speech language therapy and is designed to support post-graduate study in speech-language therapy

### Marion Saunders Literary Award

This is offered by the Marion Saunders Trust for an outstanding piece of original writing or research into matters or problems related to speech-language therapy.

## NZSTA Funding Grant

The NZSTA awards funding grants to members seeking to develop clinical or professional knowledge, or complete study or research that will benefit NZSTA and/or the speech language therapy profession. We have up to \$1,500 available annually for members. Grants may be made to more than one recipient, and may be less than \$1,500. This year's recipient was Stella Ward who attended the ASHA convention and signing of the Mutual Recognition Agreement. Stella has been very involved in NZSTA's application to join the MRA and it was fitting she attend the signing of the agreement.

## Conference Report: Inaugural Allied Health Conference, November 2008

Submitted by Fiona Hewerdine, Speech-language Therapist, Tauranga Hospital

The Conference Convenor, Janice Mueller, acknowledged that the last five years have seen huge growth in the Allied Health identity across New Zealand. In response, the workforce committee put together a strategic framework to guide workforce activities for the Health and Disability Sector up to 2010, with Allied Health as one of the six strategic groups. The Conference was a result of this group's leadership.

At the Conference it was hoped there would be opportunities to learn, share together, network and participate in professional development. The plan is to break down the barriers between the "tribes", acknowledging this as part of our history but pressing for a nation of Allied Health. It is endorsing inter-professional practices and team work, encouraging sharing of learning and innovation by implementing "evidence based practice", and providing tools for developing leaders in Allied Health. It also promoted service strategy, policy, structure and clinical governance as well as innovation and liaison with the primary health context.

The Conference was sponsored by Orion Health, the PSA, Career Force, Health Sector Conferences and Future Work Force.

International speakers came from the U.K. and provided the delegates with 2 books: "Managing and Leading in the Allied Health Professions", edited by Robert Jones and Fiona Jenkins, and "Developing the Allied Health Professional", also edited by Robert Jones and Fiona Jenkins. These two U.K. International speakers presented discussions on "Developing roles for Allied Health and Sharing Experience", "Time is money, and how do we spend it", and "Are you match fit, pushing the parameters and shaping tomorrow". Other speakers came from Australia, representing podiatry, social work, speech-language therapy, physiotherapy, occupational therapy, dietetics, mental health, and physical health.

This 2 day Conference was followed by a 1 day Master Class run by Dr. Robert Jones and Fiona Jenkins looking at their tool for analysing Allied Health Management, considering organisational duties, strategic, clinical governance, human resources,

budget management etc. This day was attended by 60 delegates from throughout New Zealand; and we are delighted to acknowledge that speech-language therapy was represented not only in the speakers for the first day, but also in delegates for the Master Class.

Poster presentations were also available, along with a 'spotlight' on the Allied Health Professional's Forum for which the NZSTA has a delegate.

The message from the conference was about working together under the Allied Health 'umbrella', and the significance of the changing health arena, in terms of availability as staff to provide services for the growing and ageing population. This was a very encouraging three days and it is hoped the conference will occur on a biennial basis with the alternating year providing access to the Australian biennial conference, and that the Master Class may occur on a yearly basis.

So watch this space and put your names forward for these two events and help steer the future of our Allied Health Professions.

## SIG: NZ Cultural and Linguistic Diversity

Submitted by Taiying Lee, Speech-language Therapist, Ministry of Education: Special Education (Pakuranga)

Do you have a passion – or maybe just an interest - in cultural issues and bilingualism/ multilingualism in communication disorders? Would you like to participate in a forum to discuss and learn more about it? You are in luck - we have just formed a new group from an old one: the *NZ Cultural and Linguistic Diversity (CLD) SIG* (formerly the *NZ Multicultural Interest Group*). This new group is web-based, using some social networking software to set up a website, so there is now easier access to information and fewer delays in communication.

The primary aims of the *NZ CLD-SIG* have not changed. They are to provide SLTs (and associated professionals) with a forum to form networks and support each other in working with bi/multilingual clients and their families; to discuss and problem solve

bi/multilingual or cultural cases; share relevant resources and articles; and share expertise, knowledge and experience in working with bi/multilingual clients and their families.

Who is doing this, you ask? The *CLD SIG* group is headed by Taiying Lee (SLT with Pakuranga GSE in the Manukau district, in Auckland), Dr Linda Hand (Lecturer at the University of Auckland MSLT programme, convenor of the MIG in Australia until 2007, and editor of the *MIG Bulletin* for many years), and Kathy Arlidge (SLT with Otahuhu GSE in the Manukau district for many years and now with GSE in Kaikohe).

Currently, the *CLD-SIG* has members all across New Zealand (ie, the old *NZ MIG* members), and the primary form of networking and communication between

members in the past has been email. However, the webpage mentioned above will shortly be available for all members, as a place where you can post any related questions or queries, set up discussion groups, have access to articles and resources, and supply and read information on upcoming events. There will also be space on the *NZ CLD-SIG* webpage for members to set up their own local *CLD-SIG* groups. It is a members-only site, so you have to be invited to join (this prevents malicious interference) and members will receive notification and descriptions on how to access and use the webpage shortly (we hope).

If you would like to be a member of the *NZ CLD-SIG*, we warmly invite you to join, by contacting the convenor of the group, Taiying Lee, [Taiying.lee@minedu.govt.nz](mailto:Taiying.lee@minedu.govt.nz)

# Book Review: Early Communication Skills for Children with Down Syndrome: a Guide for Parents and Professionals (2<sup>nd</sup> Edition)

Submitted by Dorothea Pienaar, Student, University of Auckland

Kumin, Libby. (2003). *Early communication skills for children with Down Syndrome: a guide for parents and professionals* (2<sup>nd</sup> ed.). USA: Woodbine House. ISBN 1-890627-27-5.

## Introduction

The author of this practical and comprehensive resource, Libby Kumin (Ph.D., CCC-SLP) has extensive experience of Down Syndrome (DS). She focuses her goals on better communication and a meaningful life for people with DS. Kumin points out that research supports the view that children with DS have sufficient communicative capabilities to help them develop adequate communication skills. Early intervention with children with DS is emphasised. According to Kumin, children with DS's speech and language abilities can develop through their life span. In uncomplicated language, Kumin's book generates a realistic, but creative, motivating and exciting journey.

## Content

The book follows the typical sequence of communication development. The difference between language, speech and communication is explained initially. The next section points out specific features and asynchronous development of the speech and language skills of children with DS. Auditory, visual and tactile skills in communication development are emphasised. Kumin supports other researchers in their view that children with DS remember better when visual stimuli accompany auditory stimuli.

In chapter three Kumin starts an exploration through the early stages of communication. A discussion of early interactions with the baby who has DS, including early communication encounters like turn-taking, is followed by an analysis of the infant's sensory experiences. Kumin highlights the importance of feeding for the development of the tongue-, lip- and other oral muscles.

The next chapter discusses in detail the antecedents for successful language development. Numerous activities and games provided will be helpful tools for parents and professionals. Two chapters on the one-, two- and three-word stages follow. Kumin reviews the importance of reading to and playing with the child, and presents effective ways to teach words and

concepts.

A chapter on linguistic development follows, discussing semantics and morphology. Children with DS develop receptive language skills before expressive skills. Intelligibility is often a challenge. Anatomical and physiological features, neurological functioning, articulation, resonance, phonological processes, voice and prosody are considered. A more in-depth examination of articulation and phonology precedes a chapter on pragmatics.

In chapter 11 augmentative and alternative communication systems -- communication boards, photo albums, picture exchange systems (PECS) and electronic speech devices -- are discussed and evaluated. Kumin gives guidelines to facilitate the use of these systems.

From chapter 12 the book explains speech and language evaluation and treatment methods. This is particularly helpful to clarify the intervention process to parents. The book concludes with three chapters on literacy learning, the child's communication functioning and needs at school and in the community, and a few general reflections.

## General layout of the book

The chapter divisions are handy for quick reference. The book lay-out is uncomplicated, with concise summaries in

highlighted boxes. Little house pictures announce creative ideas for use at home, in the classroom and for clinical situations. Pictures give a personal touch to all the information and add to the book's attractiveness.

Team efforts are highlighted: multidisciplinary teams working towards common goals, as well as parents becoming part of the team. Professionals can use this book and also give it to parents as all aspects of the child with DS's development (even medical aspects) are explained in clear language. A useful glossary clarifies terminology.

## Research emphasis

This book's clinical utility is enhanced with Kumin backing up her own clinical observations with research findings. Kumin encourages professionals working with children with DS to continue adding to the existing body of knowledge.

A comprehensive resource guide at the end of the book gives contact information on different USA organisations and informative websites that are easily accessible to anyone. A list of useful children's books and songs are also included.

This book is easy to read and should be on the bookshelf of every professional and parent who is associated in some way with the child who has Down Syndrome.

## New Zealand Speech Language Therapy Private Practice Group

The New Zealand Speech Language Therapy Private Practice Group held its first meeting on 13 December 2008 in Parnell, Auckland. Its current membership includes clinicians from Auckland, Tauranga, Whakatane, Hawkes Bay and Wellington. We welcome any new members. We are looking at regular meetings using teleconferencing and possibly chat rooms to facilitate networking and support for Speech Language therapists in private practice throughout New Zealand.

Our next meeting is scheduled for: 14 February 2009 at 9.30am at 7 Kitchener Rd, Takapuna, Auckland. In addition, we are exploring the option of a meeting at the NZSTA PD Event in Nelson (details to be confirmed).

We welcome new members. Anyone interested in joining the New Zealand Speech Language Therapy Private Practice Group or attending the next meeting please email Sally Barrable at: [andy.sal@xtra.co.nz](mailto:andy.sal@xtra.co.nz)

## Special Interest Contacts

The following people are not necessarily experts in the field, but people with a special interest in this area of work. To call or email someone on the list may provide you with a good web site, book reference, case study from experience, another local SLT contact, etc.

Interest	Therapist	Email Address
Accent Reduction	Tracy Kendall	speech.therapy@xtra.co.nz
Acquired Communication Disorders	Dr Megan McAuliffe	megan.mcauliffe@canterbury.ac.nz
Adult Neuro Communication	Patty Govender	p.t.govender@massey.ac.nz
Alternative Augmentative Communication (AAC)	Cheryl Palmer	cheryl.palmer@minedu.govt.nz
Aphasia	Gillian Bell Clare McCann Colette Maier	communication@actrix.gen.nz c.mccann@auckland.ac.nz colette@notonlywords.co.nz
Aspergers Syndrome	Prue Wignall	prue@language-development.com
Auditory Processing Disorders	Lucy Sparshott	lucy.sparshott@yahoo.com
Autism	Cheryl Palmer Prue Wignall	cheryl.palmer@minedu.govt.nz prue@language-development.com
Cleft Palate and Lip	Marilyn Heine Maeve Morrison Laura Wells	marilyn.heine@huttvalleydhd.org.nz mamorrison@middlemore.co.nz wellsl@middlemore.co.nz
Complex Needs	Cheryl Palmer	cheryl.palmer@minedu.govt.nz
Developing Countries – providing SLT	Laura Wells	wellsl@middlemore.co.nz
Down Syndrome	Cheryl Palmer Prue Wignall	cheryl.palmer@minedu.govt.nz prue@language-development.com
Dysphagia	Patty Govender	p.t.govender@massey.ac.nz
Dysphagia, paediatric	Fiona Kenworthy	fkenworthy@middlemore.co.nz
Dysphonia (singers & performers)	Iris Hambling	irispeak@hotmail.com
Emotional /behaviour difficulties associated with children's language difficulties	Sally Kedge	s.kedge@uq.edu.au
ESOL (English for speakers of other languages)	Anita Hurburun	hurburun@xtra.co.nz
Fluency - adults	Roz Young	rozyoung@xtra.co.nz
Head and Neck	Vanessa Jerome	vanessa.jerome@otagodhb.govt.nz
Head and Neck cancer	Jeanette Gillibrand Fiona Hewerdine Shirley James	jeanetteg@adhb.govt.nz fiona.hewerdine@bopdhd.govt.nz Shirley.James@huttvalleydhd.org.nz
Language- learning Disabilities	Dr Marleen Westerveld	m.westerveld@gmail.com
Language/Phonological impairment – early intervention	Colette Maier	colette@notonlywords.co.nz
Laryngectomy	Fiona Hewerdine	fiona.hewerdine@bopdhd.govt.nz
Maori Immersion Settings	Kerrie Gallagher	kerrie.gallagher@minedu.govt.nz
Motor Neurone Disease	Fiona Hewerdine	fiona.hewerdine@bopdhd.govt.nz
Motor Speech Disorders	Dr Megan McAuliffe	megan.mcauliffe@canterbury.ac.nz
Private Practice	Tracy Kendall	speech.therapy@xtra.co.nz
SALT (Spontaneous Language Sampling & Analysis)	Dr Marleen Westerveld	m.westerveld@gmail.com
Student supervision	Patty Govender	p.t.govender@massey.ac.nz
Stuttering	Anna Hearne	support@stuttering.co.nz
Traumatic Brain Injury (TBI)	Insight Team Ltd	admin@insightteam.co.nz
Voice Disorders Voice Disorder (Adults)	Jeanette Gillibrand Vanessa Jerome Gay Williamson Roz Young	jeanetteg@adhb.govt.nz vanessa.jerome@otagodhb.govt.nz gwilliamson2000@xtra.co.nz rozyoung@xtra.co.nz

If you are a member and have a special interest in a disorder category or service focus and would be happy to be cited in this list, or the contact details are incorrect please contact the Executive Officer (nzsta@speechtherapy.org.nz) with your name, email and your special interest.



Clare McCann

It was another busy quarter for the Professional Standards portfolio. I'm beginning to realise that they will all be busy!

I would like to begin by extending my congratulations to Colette Maier, Stella Ward, Felicity Bright, Gina Tillard and all the members who contributed (so much over so many years) to the successful signing of the MRA document at the ASHA annual conference in Chicago on 22nd November 2008. This wonderful

achievement is something we can all be proud of. The next few months will see the implementation of the commitments we have made as an Association.

We had a very successful meeting of the Programme Accreditation Council on 1st September (with Megan McAuliffe acting as an observer). The meeting reviewed the Annual Reports submitted by the three university degree programmes and discussed the Council's Terms of Reference. We accepted the resignations of Alison Paulin (effective immediately) and Gail Gillon (effective 31st December 2008). We are extremely grateful to them both for their contributions to the Council. I called for nominations to replace both Alison (private practice) and Gail (Chair) in the last edition of *Communication Matters*. We had a number of people show interest in these positions (or suggest someone else who may be suitable). The Exec unanimously approved Linda Hand as

the new Chair and Colette Maier for private practice. 2009 will be a busy year for PAC as we begin the revision of the Programme Accreditation Framework (originally written in 2001) in preparation for the next round of site visits and reaccreditations.

We have had a large number of applications for approval of overseas qualifications this quarter. It is hoped that the process will be significantly streamlined when the MRA takes effect in January 2009. Non-MRA applications will still take some time to approve, but the MRA applications will be much more straight forward. The processing time (for non-MRA applications) is up to six weeks from receipt of the complete application. Unfortunately, the vast majority of applications are incomplete when they are submitted, so this makes the whole process much longer. I am extremely grateful to Shona Powell for all the administrative support she gives to the process of approving these.

---

## Speech-Language Therapy Assistant Position Paper

It gives me great pleasure to announce that the Executive committee approved the *Speech Language Therapy Assistant Position Paper* at our meeting in early December. The working party (Adele Manna, Christian Wright and chaired by Alison Paulin) was formed in August 2007 following active recruitment from the membership in early 2007.

The working party explored the use of speech-language therapy assistants worldwide, as well as within the New Zealand workforce context. Following a series of useful (and successful) meetings, the working party summarised its findings

in the position paper. The paper outlines:

- (1) the current use of speech-language therapy assistants in New Zealand,
- (2) the rationale for using speech-language therapy assistants,
- (3) the proposed scope of practice for speech-language therapy assistants,
- (4) training and supervision requirements, and
- (5) a formal statement regarding the role of the NZSTA and speech-language therapy assistants.

It details the differences between assistants employed within an education setting and

those employed within a health setting and the different terminology used to describe the role (e.g. Education Support Worker; Communication Support Worker; Rehabilitation Assistant; Therapy Assistant or Teacher Aide). It also cites recent research in setting out the rationale for the use of SLTAs (both the benefits and the risks).

I urge you to read this important position paper. It can be accessed via the website on the "Guidelines and Position Papers" page of the "Information for Therapists" section (please note, this is a 'members only' section).

## Scope of Practice

I have been giving a great deal of thought to developing a Scope of Practice for NZSTA. "Scope of Practice" refers to the breadth of professional practice offered within the profession and aims to outline the populations served, the contexts in which the service is provided, the rationale for the services provided and the modalities in which it is provided. This document would inform service managers, employers and the general public about the role of speech language therapists within New Zealand.

Keen readers will remember from the September edition of *Communication Matters* that I mentioned the possibility of developing further the very brief

Scope of Practice prepared for the HPCAA review and MRA process. Currently, we use *Communicating Quality 3* (published by the Royal College of Speech and Language Therapists), however, some aspects of this very detailed publication are not suitable for the New Zealand context.

I would like to establish a working party (4-5 people) to develop a suitable New Zealand-specific Scope of Practice. Preferably we would representation from a range of different clinical areas, but this is not essential (I wouldn't turn away any volunteers). You would need to be someone with a keen interest in the profession, an ability to communicate this to a wide and

varied audience, attention to the detail of clinical practice and a modest amount of spare time!! It is envisaged that this would be a 12-18 month project, commencing sometime in the first half of 2009.

I know we ask a lot of individual members, but this is an opportunity to make a contribution to the profession as a whole and would look good on your CV. Please let me know via email if this is something you'd be interested in. Alternatively, you may think one of your work colleagues would be ideal. Feel free to suggest their name (with their approval of course) and I will contact them.

## Mutual Recognition Agreement Update

*submitted by Colette Maier, MRA Working Party Chair*

The NZSTA is delighted to inform members the Mutual Recognition Agreement was signed on November 22<sup>nd</sup> in Chicago. The signing marks a significant milestone for the NZSTA and the profession in New Zealand. The American Speech Hearing Association (ASHA) hosted the signing ceremony which was a wonderful celebration. Megan and I signed the agreement on behalf of the NZSTA. We were delighted that Stella Ward, Dean Sutherland, Tika Ormond and Catherine Moran took time out of their busy schedules to attend the ceremony and celebrate with us. After the signing we were hosted to afternoon tea in the presidential suite by the ASHA president Catherine Gottfred. Catherine was staying in the presidential suite at the Chicago

Hilton and rumours abound that president-elect Barack Obama stays there at times. Suffice to say the presidential suite is the size of a small house, has a bathtub the size of a swimming pool and a stunning view! What a wonderful treat.

Then it was time for business. The MRA group met to discuss the implementation phase of the agreement and to update one another on developments within the profession. As always it is so interesting to hear how speech-language therapy is evolving and changing in other countries. There is so much knowledge to be shared. The new MRA will come into effect in January 2009. The necessary documents and information for applicants are currently being collated. Special thanks to Amy

Waite from the University of Auckland, Clare McCann and Shona Powell for assisting me with this phase of the process. The NZSTA website will be updated in January with information on the MRA for applicants wishing to use the MRA to join the NZSTA. Full members of the NZSTA interested in applying to one of the signatory associations will be able to access some information on the NZSTA website but will need to visit the website of the relevant association for detailed information on applying.

Please visit the website after January 1<sup>st</sup> for information. If you can't find the answer to your questions please email Shona [nzsta@speechtherapy.org.nz](mailto:nzsta@speechtherapy.org.nz) or contact your area representative.



**Dean Sutherland**

Seasons greetings! I trust you have embarked on some well deserved rest and recreation after a memorable 2008. Thank you to those who have taken the opportunity to forward your thoughts for developing the profile of the association both with existing and potential members. As an executive portfolio holder, I represent you and work to develop your ideas and interests. So please continue to think creatively and forward your thoughts to me. I then present these at executive meetings for further discussion to prioritise items for further development.

Thanks to Jessie Kidwell (Canterbury DHB) for her suggestions around welcome packs for new members. These will be developed in 2009 and will contain information about our association, highlight the work we do and steps to take to become active in the NZSTA. Additional items that I will be working on in 2009 include -

- Reviewing our association's image and branding.
- Communicating our strategic plan to all members.
- Developing awareness of our association among students in each training programme.
- Building our relationships with other organisations supporting people with communication impairments.

The recent election of a National-led government also provides opportunities to approach new and existing politicians about the issues facing speech-language therapy in New Zealand. I am about to forward a letter to all MPs in the new parliament to highlight issues such as registration and funding for services. A copy of this letter will be available on the website shortly. Recently, Bay of Plenty members and the executive team were fortunate to spend time with the newly elected Rotorua MP, Todd McClay (National). We were able to highlight a number of issues facing Speech-

language therapists. Todd also provided advice on how to lobby central government regarding topical issues. I look forward to developing my lobbying skills in 2009 to ensure speech-language therapists have a voice in Wellington. In the meantime I encourage each of you to make a resolution to contact your local MP early in the new year and let her/ him know that speech-language therapists have something to say.

Could I also encourage each of you to visit the NZSTA ([www.speechtherapy.org.nz](http://www.speechtherapy.org.nz)) website to ensure you are familiar with NZSTA operations, events and resources. Matt continues to do a fantastic job maintaining this important resource. A good rummage around the website will provide you with excellent information about the association to ensure that you are an 'informed member'. Active and informed members are vital for our association to thrive.

Although media coverage has been difficult to achieve lately with the dominant election

and economic activities, I continue to be in contact with media personnel who are willing to consider human interest stories. I have also been asked for information about families or individuals who have had difficulty accessing speech-language therapy services. If you know someone who may be willing to share their experiences, please contact me.

An additional project I am working on is the development of a visual record of speech-language therapy in practice. If you have any photographs of your work that might contribute to this, please let me know. I look forward to integrating these photos with print media articles into a pictorial display at the professional development event/ AGM in Nelson next April.

Best wishes for a relaxing holiday season. I look forward to hearing from and meeting with many of you in the New Year and working with you to move the association forward.



*Waikato Paediatric Feeding Workshop  
Local organiser Carla Knott with presenters Terry Wackrow and Melissa Keesing (Turid Peters not in photo)*

2009 - Semester 2 and may be offered in Semester 1

## **SPCHSCI 721 Dysphagia (e-learning course) – University of Auckland**

An e-learning course on dysphagia that meets NZSTA requirements for dysphagia training. This course is designed as a professional entry-level qualification covering all aspects of swallowing and feeding rather than a professional development course for dysphagia-trained therapists. Further information at [www.psych.auckland.ac.nz/slt/spchsci.htm](http://www.psych.auckland.ac.nz/slt/spchsci.htm) or contact Clare McCann at [c.mccann@auckland.ac.nz](mailto:c.mccann@auckland.ac.nz) or Sue O'Shea at [s.oshea@auckland.ac.nz](mailto:s.oshea@auckland.ac.nz)

February 2nd 2009

## **The Listening Brain: Dr. Carol Flexer – The Hearing House, Greenlane, Auckland**

The Listening Brain: Research to Practice (9.30am - 12.30pm) and Acoustic Accessibility: Facilitating Classroom Listening for All Children (1.30pm - 4.30pm)

To register for the course e-mail [reception@hearinghouse.co.nz](mailto:reception@hearinghouse.co.nz)

March 9th –10th 2009

## **Assessment & Intervention for the High Risk Infant in the Neonatal Intensive Care Unit and After Discharge – Hawkes Bay**

For information and application form e-mail [Danielle.Atkins@hawkesbaydhb.govt.nz](mailto:Danielle.Atkins@hawkesbaydhb.govt.nz)

March 9th –10th 2009

## **2009 National Conference on Caring, Building the Future with Family Carers – Gold Coast, Australia**

More information at [www.astmanagement.com.au/Carers9](http://www.astmanagement.com.au/Carers9)

March 11th –12th 2009

## **Brazelton Neonatal Behavioural Assessment Scale (NBAS) Training – Hawkes Bay**

UK NBAS-Certified Trainer: Elizabeth Hutchon, Consultant Occupational Therapist. For information and application form e-mail [Danielle.Atkins@hawkesbaydhb.govt.nz](mailto:Danielle.Atkins@hawkesbaydhb.govt.nz)

March 16th – 21st 2009 (6 days)

## **Early Assessment and Intervention with Babies and Young Children with Neurodevelopmental Problems based on Bobath/NDT Principles (NZBA Inc) – Auckland**

NZBA Inc Approved Course. UK Instructors: Jean Pierre Maes & Elizabeth Hutchon. For information and application form e-mail [Carolyn.Simmons@xtra.co.nz](mailto:Carolyn.Simmons@xtra.co.nz)

March 17th – 18th 2009

## **RCSLT Scientific Conference – London, UK**

Topics cover the whole range of child and adult clinical specialisms, innovation and development; partnership working; diversity; and the latest speech and language therapy research. Full information at [www.rcslt.org/news/events/scientificconference2009](http://www.rcslt.org/news/events/scientificconference2009)

March 2009 and July 2009 – One day seminar in various locations (see below)

## **Creating Success: Sue Larkey - Autism seminar**

24th March: Auckland (Takapuna)

25th March: Hamilton

26th March: Napier

27th March: Palmerston North

29th July in Whangarei, 30th July in New Plymouth, and 31st July in Christchurch

Sue Larkey is an international expert in autism and asperger's syndrome. These seminars focus on Sue's Teaching Strategies and Behaviour Support. Registrations for these seminars can be made by visiting [www.creatingsuccess.co.nz](http://www.creatingsuccess.co.nz)

April 30th and 1st May 2009

## **NZSTA Professional Development Event and AGM – Trailways Motor Inn, Nelson**

Felicity Bright (Professional Development Portfolio Leader) is interested in hearing from individuals who are interested in presenting at this event. This may be clinical initiatives, research, projects or anything else happening in your workplace or the wider SLT community that others may want to hear about. This event is an excellent opportunity to develop your presentation skills and confidence. As it is a relatively small event, there is flexibility for allocation of timeslots for presentations; from twenty minute presentations to two hour workshops. E-mail Felicity at [professionaldevelopment@speechtherapy.org.nz](mailto:professionaldevelopment@speechtherapy.org.nz) if you are interested or would like more information.

May 17th – 21st 2009

## **Speech Pathology Australia National Conference – Adelaide, Australia**

ASPIRE – Advancing Speech Pathology Innovation, Research and Excellence. For more information e-mail [conference@speechpathologyaustralia.org.au](mailto:conference@speechpathologyaustralia.org.au)

May 21st – 23rd 2009

## **5th Australasian Newborn Hearing Screening Conference – Adelaide, Australia**

The main theme is National Standards. Professor Adrian Davis and Associate Professor Gary Rance are confirmed as featured presenters. Abstracts must be submitted by 16 February 2009. Further information at <http://www.plevin.com.au/anhsc2009/>

July 6th – 10th 2009

## **Makaton Tutor Training Course**

July 11th 2009

## **Makaton Signing for Babies Tutor Training Course**

Both courses to be held at Otimai Girl Guide Complex in Oratia, Waitakere, Auckland

E-mail Anne Cooney for more information at [makaton@clear.net.nz](mailto:makaton@clear.net.nz) or go to [www.makaton.org.nz](http://www.makaton.org.nz). Applications close Friday 29th May 2009

# Conferences and Courses

July 7th – July 9th 2009

## The Assistive Technology Association of New Zealand (ATANZ) Conference 2009: Focus on Function – University of Canterbury, Christchurch

The keynote speaker for this conference will be Dr. Sarah Blackstone.

The conference planning committee are calling for additional papers for this conference – due February 27th 2009.

Applicants can download the form at [www.atanz.org.nz](http://www.atanz.org.nz). For more information e-mail Dean Sutherland at [dean.sutherland@canterbury.ac.nz](mailto:dean.sutherland@canterbury.ac.nz).

July 17th – 18th 2009

## Language and Literacy: Making Them Work for Children – University of Auckland, Tamaki Campus

Presenter - Professor Robert Owens of the State University of New York, Geneseo, New York. Register interest with Sue O'Shea at [s.oshea@auckland.ac.nz](mailto:s.oshea@auckland.ac.nz)

November 6th – 8th 2009

## IALP 3rd International Symposium on Communication Disorders in Multilingual Populations – Cyprus

[www.speechtherapy.org.cy/documents/News/3rd\\_symposium\\_on\\_communication\\_disorders.pdf](http://www.speechtherapy.org.cy/documents/News/3rd_symposium_on_communication_disorders.pdf). More information is available at [www.ialp.info](http://www.ialp.info).

---

## Situations Vacant

# Rates for Advertising

Members are encouraged to advertise in *Communication Matters* to ensure a wide readership. Advertising rates have been set competitively to encourage you to use this service.

### Schedule of Rates (GST exclusive)

Size of Advertisement	Communication Matters	NZSTA Website
Full page (17cm width x 26cm depth)	\$400	\$500 for one month
Half page (8.5cm width x 26cm depth, or 17cm width x 13cm depth)	\$300	
Quarter page (8.5cm width x 13cm depth)	\$150	

Send camera ready advertisements email as a pdf, jpeg, tiff or eps files to the Executive Officer email: [nzsta@speechtherapy.org.nz](mailto:nzsta@speechtherapy.org.nz). If sending word documents please send photos and graphics separately as jpeg, tiff or eps files.

### Closing Date

The closing date for receipt of advertising and articles for the next edition of *Communication Matters* is 25<sup>th</sup> February 2009 and items should be sent to: Shona Powell, Executive Officer, email: [nzsta@speechtherapy.org.nz](mailto:nzsta@speechtherapy.org.nz)

### Disclaimer

NZSTA reserves the right to refuse for inclusion in *Communication Matters*, any articles, advertisements which are contrary to the NZSTA Code of Ethics. Unless formally stated to the contrary, acceptance and publication of material and advertising does not imply endorsement of views, positions, programme or product by NZSTA.

### Theming Graphic – Front Cover

The graphic symbolises communication – soundwaves. It has a slight ethnic influence to include all cultures. Association colours of blue and gold have been retained.

**Adult Health Services**

Let's grow together



**Zest for your job isn't all that will grow here...**

**Allied Health Professionals**

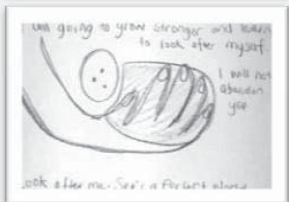
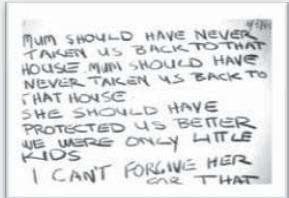
...because when you become part of the team at Waitemata DHB, you'll find professional growth really does go hand in hand with personal satisfaction. It's just what happens when you're part of an organisation that's not only growing at a phenomenal rate, but as a result has a real sense of vibrancy and positivity that seems to rub off on everyone. If you're a **Physiotherapist, Speech Language Therapist, Occupational Therapist or Social Worker**, we'd love you to come and grow your career with us. New acute and specialised services, great teams, a real focus on learning and development – they're all waiting for you at Waitemata.

**For more information and to apply, please visit our website.**



Let's grow together. [www.growingcareers.co.nz](http://www.growingcareers.co.nz)

**More Than Words...  
Interactive Drawing Therapy**



- Effective
- Safe
- Fast
- Versatile
- Inspiring

**Powerful Tools for Skilled Professionals**

To register for our training courses or for more information  
[www.InteractiveDrawingTherapy.com](http://www.InteractiveDrawingTherapy.com)  
idt@pl.net or +64 9 376 4789



**Thinking of working in the UK?**

Whether you're planning a working holiday or seeking to advance your career in the UK, the smartest move you can make is to register with Reed HealthCare.

Our friendly, experienced consultants will guide you through the necessary paperwork and give you all the help you need to become a front runner for the best jobs available in your field.

As a Reed HealthCare candidate, you'll be way ahead right from the start. Prospective employers know that your credentials have been verified, you comply with all the current regulations and when you're available to start work on arrival in the UK.

For more information on our services or to recommend a friend call us now.

**Freecall: 0800 803 854**  
**Email: [globalresource.melbourne@reedjobs.com](mailto:globalresource.melbourne@reedjobs.com)**  
**Web: [www.reedhealthcare.com.au](http://www.reedhealthcare.com.au)**

Reed HealthCare is a brand of Reed Personnel Services Pty Ltd.



## EXECUTIVE BOARD

### Executive Committee

#### President

Megan McAuliffe  
Dept of Communication Disorders  
University of Canterbury  
Private Bag 4800  
Christchurch  
(03) 364 2987 ext 7075 (W)  
president@speechtherapy.org.nz

#### Publications & Area Rep Liaison

Matt Walker  
46 Hudson Street  
Bryndwr  
Christchurch  
(03) 354 5373 (H)  
(03) 364 2987 ext 7304 (W)  
publicationsandareareps@speechtherapy.org.nz

#### Public Relations

Dean Sutherland  
Dept of Communication Disorders  
University of Canterbury  
Private Bag 4800  
Christchurch  
(03) 364 2987 ext 7176 (W)  
publicrelations@speechtherapy.org.nz

#### Professional Standards

Clare McCann  
Department of Psychology, Tamaki Campus  
The University of Auckland  
Private Bag 92019  
Auckland  
(09) 3737599 Ext 85221 (W)  
professionalstandards@speechtherapy.org.nz

#### Professional Development

Felicity Bright  
6/26 Queen Mary Avenue  
New Lynn  
Waitakere  
Auckland 0600  
(09) 826 1961 (H)  
professionaldevelopment@speechtherapy.org.nz

**NZSTA**

**Suite 369**

**63 Remuera Road**

**Newmarket**

**Auckland**

### Area Representatives

#### Northland-Tai Tokerau

Sharon Collier  
12 Dismiss Avenue  
Kensington  
Whangarei  
(09) 436 8960 (W)  
(09) 437 0650 (H)  
sharon.collier@minedu.govt.nz

#### Auckland

Yvonne Cope  
53 Moffat Road  
Red Beach  
Auckland  
(09) 427 9932 (H)  
(09) 443 9716 (W)  
y.cope@massey.ac.nz

#### Waikato/BOP

Carla Knott  
296 Paroa Road  
R D 2  
Whakatane  
(07) 308 4070  
richard.knott@xtra.co.nz

#### Central

Jodi White  
SLT Department  
Star Centre  
Palmerston North Hospital  
P O Box 2056  
Palmerston North  
(06) 350 8594 (W)  
jodi.white@midcentraldhb.govt.nz

#### Wellington (shared position)

Amanda Bell  
25 Pembroke Road  
Wilton  
Wellington  
(04) 475 6015 (H)  
(04) 918 2191 (W)  
manz\_nz\_2000@yahoo.co.nz

#### Kate McLean

1 Glenamoy Crescent  
Johnsonville  
Wellington 6037  
(04) 477 9912 (H)  
kmmkiwi@gmail.com

#### Canterbury (shared position)

Tika Ormond  
5 Te Kura Street  
Riccarton  
Christchurch  
(03) 341 7051 (H)  
(03) 366 7001 (W)  
tika.ormond@canterbury.ac.nz

Alison McCormick  
61 Richmond Hill Road  
Sumner  
Christchurch  
(03) 326 4271 (H)  
(03) 377 9812 (W)  
alison.mccormick@canterbury.ac.nz

#### Otago/Southland

Michelle Johnson  
396 Taieri Road  
Halfway Bush  
Dunedin 9010  
(03) 474 7007 Ext 8218 (W)  
michelle.johnson@otagodhb.govt.nz

#### Canterbury Student Rep (shared position)

Amy Campbell  
atc50@student.canterbury.ac.nz  
Amy Collings  
abc34@student.canterbury.ac.nz

#### Massey Student Rep (shared position)

Karen Freymark  
k\_freymark@yahoo.co.nz  
Samantha Holmes  
holmes.samantha@gmail.com

#### Auckland Student Rep

Melinda Johnson  
Ph (09) 579 0628  
mjoh44@aucklanduni.ac.nz

### Other

#### NZSTA Executive Officer

Shona Powell  
P O Box 38 070  
Parklands  
Christchurch 8842  
(03) 383 1518 (H & W)  
nzsta@speechtherapy.org.nz

#### NZSTA Journal Editor (Interim)

Marleen Westerveld  
m.westerveld@gmail.com

#### SLT Resource Room

C/o Carlson School  
261 St Andrews Road  
Epsom  
Auckland  
(09) 624 3308  
Open Tuesdays 4.00-6.00p.m.  
Inventory of SLT Resources for borrowing  
Email: sltresources@hotmail.com

#### NZSTA Website Address

<http://www.speechtherapy.org.nz>

#### NZSTA Email Address

[nzsta@speechtherapy.org.nz](mailto:nzsta@speechtherapy.org.nz)